

A lush tropical forest scene with tall trees and dense ferns. The image is a vertical photograph showing a dense forest. In the foreground, there are large, vibrant green ferns. Several tall, slender tree trunks rise from the forest floor, some covered in moss. The background is filled with more trees and foliage, creating a sense of depth. The lighting is soft, suggesting a canopy overhead.

Moving
Your Project
Forward

eForest®

The Leading Forest Solutions Provider

“ helping clients
adapt, align and
implement their
projects ”



“ We provide pragmatic advice,
develop strategies and deliver on-
the-ground forest solutions to move
projects forward in the mining,
renewable energy, oil & gas and
REDD+ sectors. ”

Benjamin Jarvis
Founder & Managing Director

I've been working in natural resource management in Indonesia for over 14 years, and in 2010 I started eForest Management Consultants.

I wanted to develop a platform for helping companies solve some of the challenges that arise from doing business inside the national forest estate. Over 60% of Indonesia's land falls under the national forest estate, administered by the Ministry of Forestry. Forest laws are many, complicated, contradictory and often unclear in their intent.

Regardless of your line of business – if you want to set up and operate your business inside the national forest estate then you will need to deal with the Ministry of Forestry and comply with the associated forest laws and regulations. Our services facilitate clients' projects to be completed efficiently and on time. We relieve the burden of extensive government reporting and ensure that on-the-ground technical processes are professionally and safely managed in line with our internal HSE management systems.

We are Forest & sustainability specialists, Problem solvers that work across sectors, Provider of a wide range of advisory, desktop and field-based services and Custodians of our clients' best interests.

Initially we typically engage with clients as your Corporate forest advisor where we support forest licensing, compile and analyse forest laws, deliver strategic advice, prepare written briefing notes, conduct desktop studies as well as deliver HSEC management systems in support of the forest-based aspects of your project.

For companies requiring assistance on the ground, we deliver and project manage technical forest services such as forest surveys, tree inventory, supervision of tree felling, log measurement and administration, and timber processing - helping you maintain your forest permit.

We welcome the opportunity to discuss your project needs and help move your project forward.

“ we deliver value driven solutions ”



OUR VISION is to be an innovative and flexible company that delivers value driven solutions to our clients and inspires positive change for the People and forests of Indonesia.

OUR MISSION is to assist our clients to implement responsible business practices in the discovery, development and management of natural resources.

CORPORATE OVERVIEW

eForest is a specialist management consulting company based in Jakarta that helps clients solve forest-related issues in the mining, oil/gas, renewable energy & forest sectors in Indonesia.

We bring corporate forest and sustainability expertise to businesses operating within the national forest estate. The company was established to address the growing demand for professionally managed services that exceed expectations in terms of quality, reliability, health, safety and environment.

We help our clients navigate the law, understand the implications, develop sensible strategies, obtain forest license(s), comply with forest laws, conduct forest-related activities on the ground and facilitate reporting to the relevant authorities, leaving you to focus on your core business.

We also facilitate natural commercial synergies within our multinational network. Our reputation for putting our clients' interests first means that we are rapidly

becoming recognized as a reliable bridge and service partner in support of investments in Indonesia.

Our management team draws upon a network of qualified and experienced professionals to meet requirements on a project-by-project basis, coordinating across dispersed locations through traditional means and our web-based project management system.

We hold ourselves accountable to clients in real time through project workspaces that provide 24/7 access to track schedules, monitor activity progress, post comments, download and review project documents from your computer and mobile devices.

Our personal approach and ability to bring clients in to our project workspaces builds a strong foundation of trust, forming the basis for long-term relationships. Our genuine commitment to integrity, quality, collaboration, cultural respect, and delivery of value to all parties subsequently seals a circle of trust.



CODE OF BUSINESS ETHICS

We are committed to expanding our portfolio of quality projects, services and clients by being a highly professional and proficient company that exceeds expectations, where each individual accepts responsibility and is rewarded for results.

We act to earn and maintain the trust of employees, clients, suppliers, communities and stakeholders alike by performing with integrity, being open and honest in our communications and consistently delivering on our commitment of providing practical, industry-focused solutions that keep projects moving forward.

GUIDING PRINCIPLES



TRUTHFUL

we act with integrity putting client interests first

RESPONSIVE

we adapt and respond to changing circumstances

UNDERSTANDING

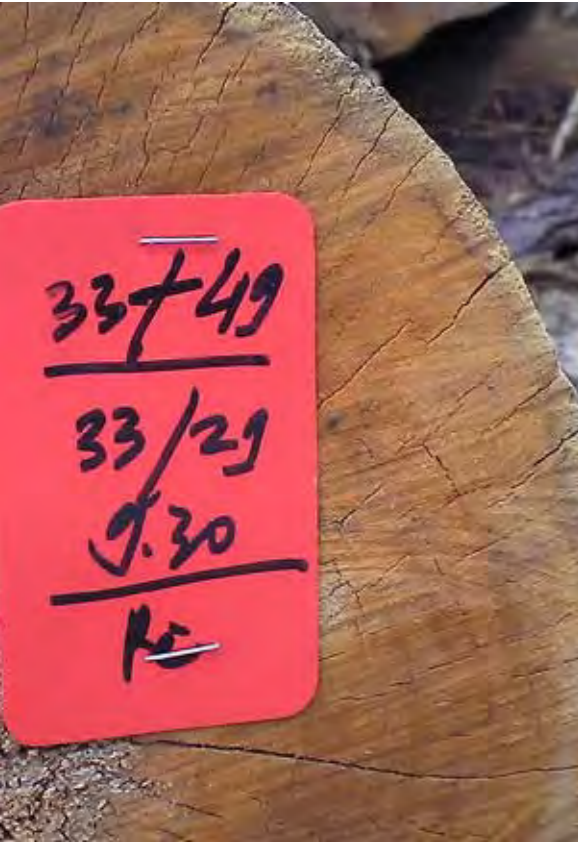
we appreciate the constraints we're required to work within

SOLUTION ORIENTED

we find positive and ethical ways forward

TARGET DRIVEN

we deliver quality work above expectations



OUR SERVICES

Our clients are typically engaged in:

- Coal and Minerals Mining
- Oil & Gas Exploration
- Sustainable Forest Management
- Reducing Emissions from Deforestation and Degradation
- Plantation Forestry
- Certification of Forest Management Performance
- Sustainable Development

We work with clients to resolve forest sector challenges through:

Provision of tailored advisory services.
We identify and summarize applicable forestry regulations and government administrative requirements, conduct tailored desktop studies, and produce Briefing Notes and Maps to enable clients to rapidly understand forest-related issues that will impact their business.

Facilitation of Project Investments
We work with contacts in our multinational network to link investors with credible investment opportunities in Indonesia. We identify business synergies based on client specifications, build an environment of trust for positive engagement, facilitate introductions and support client due diligence processes via desktop study and field visits.

Management of forest license application processes.
We assist in data collection, compilation & analysis, proposal development, application monitoring and government relations in support of Client applications for Lease & Use concessions (IPPKH), Ecosystem Restoration concessions (IUPHHK-RE), Forest Carbon Concessions (IUP PAN/RAP Karbon), Plantation Forest concessions (IUPHHK-HT) and Natural Forest concessions (IUPHHK-HA).

Project Management of forestry processes
We design, coordinate, manage and supervise forest-based activities to ensure you comply with the terms of your forest license and internal Health Safety and Environment policies and procedures:

FOREST INVENTORY: Inventory design, logistics planning, field surveys, data analysis and reporting, production of tree felling / hazardous tree maps.

TREE FELLING: Planning of felling operations, training in chainsaw maintenance and felling techniques, use of tree maps to improve operator safety, felling supervision, and log crosscutting.



“strategies
tailored to
clients’ needs”



LOG MEASUREMENT & REPORTING: Log measurement, log administration & reporting, internal log tracking & stock reporting, and calculation of forest royalties.

FOREST REHABILITATION: Site evaluation, species selection, nursery & seedling development, out-planting, rehabilitation monitoring, beating up, tree maintenance and reporting.

TIMBER PROCESSING: Timber processing for internal requirements, wood chipping, and where desired partial cost recovery through sawn timber sales.

HIGH CONSERVATION VALUE FOREST ASSESSMENT: HCV identification & reporting, HCV management & monitoring system development, integration in to Client HSE policies and procedures.

BIODIVERSITY & ECOLOGICAL MONITORING: Monitoring design, indicator selection, baseline surveys, monitoring & evaluation, management recommendations & reporting.

REMOTE SENSING & GIS MAPPING: Image and data sourcing, GIS layer development and analysis, forest interpretation, ground verification, and map production in support of project needs.

COLLABORATIVE FOREST MANAGEMENT: Identification of community stakeholders, facilitator appointment, social baseline surveys, conflict mapping, road map development, participatory mapping of village boundaries, documentation of village regulations, participatory mapping of village land use zones, development of CFM Agreements, strengthening of local community institutions, monitoring and evaluation of CFM Agreement terms & conditions.



Management of Forest Certification Processes

We support Clients to achieve third party certification based on the following standards:

WOOD LEGALITY VERIFICATION (VLK): All companies transporting wood outside of their license area are required to comply with the Indonesian government Wood Legality Standard. We collect and compile the necessary documentation and interface with audit bodies to ensure you meet the requirements.

FOREST STEWARDSHIP COUNCIL (FSC): Certification training for Top Management, facilitation of certification co-financing, audit body selection & interfacing, coordination of baseline assessment, action plan development, FSC Certification 101 training for field managers & staff, project management, oversight of assessment processes, monitoring & reporting.

VERIFIED CARBON STANDARD (VCS): Preparation of Project Design Documents, audit body selection and interfacing, oversight of project validation and verification processes, monitoring and reporting.

CLIMATE COMMUNITY AND BIODIVERSITY STANDARD (CCBS): Preparation of Project Design Documents, audit body selection and interfacing, oversight of project validation and verification processes, monitoring and reporting.



“facilitating credible
business links
and investment
opportunities”



“some of the
projects we have
worked on”



EARLY WORKS FOREST SUPPORT SERVICES

In 2012 eForest was engaged by a large multinational mining company to support one of its operations in Kalimantan. Our mandate was to measure, record and report felled tree volume to ensure the company was paying the correct forest royalties and taxes to the government. We helped the company prepare and submit its reports in a timely manner over a six-month period to the satisfaction of the client and the Regency Forest Service.

Visiting engineers that came to the site were impressed with the level of organization of the log administration compared to other sites they had worked in in Indonesia - a welcome and unintended compliment.

We also supported the client to conduct 100% forest inventory over the proposed land clearing area as the basis for calculating expected tree volume in large and small diameter size classes in accordance with license obligations. For this activity we established and ran forest camps in remote areas overcoming a number of challenges to complete the job to the required quality. The tree position maps produced identified the locations of hazardous trees, normal trees and protected species - improving safety of tree felling operations.

During periods of low activity our teams demonstrated initiative by supporting small improvements in the main base camp area, much to the appreciation of the client.

HIGH CONSERVATION VALUE ASSESSMENT

One of eForests' first projects was to conduct a high conservation value assessment for a natural forest concession company, in East Kalimantan. The client wanted to achieve certification of its forest management performance in accordance with the FSC standard and one of the main outstanding requirements was to undertake a comprehensive HCV assessment.

eForest brought together a strong team of experts with GIS, social, ecological, and forest management experience and spent a three-week period in the field identifying and documenting HCVs. We compiled and collated materials in to a unique report making recommendations for easy integration in to the company's standard operating procedures.

As part of this process we facilitated a public consultation with key stakeholders close to the concession where we sought input to the identification, management and monitoring of the HCVs.

We produced a public consultation report, updated the HCV assessment report and subsequently uploaded the report to the Indonesian HCV network website for comment. The final report was peer reviewed by a recognized HCV expert, receiving positive review. The client's FSC forest management certificate was issued shortly thereafter.



FOREST MORATORIUM GIS ANALYSIS

This was a desktop study to help an international mining company understand the implications of Indonesia’s forest moratorium on their proposed license application. We conducted time series analysis of Landsat imagery at three points in time to identify and map forest disturbance based on historical presence of logging roads, forest openings, and wild fire, in addition to mapping the presence of rivers to account for shifting cultivation by local people. We then compared the Ministry of Forestry’s moratorium maps with our results to indicate areas of primary forest. Our results subsequently fed in to the client’s internal decision-making processes.

“one of our most succesful projects”

APPLICATION PROCESS FOR AN ECOSYSTEM RESTORATION CONCESSION LICENSE

The President’s international commitment to reduce Indonesia’s green house gas emissions and his pro poor, pro jobs, low carbon economic development policies provide a positive business environment for companies engaged in forest sustainability.

Our passion for sustainable use of forests brought us in to contact with an institutional REDD+ investment company looking to apply for an Ecosystem Restoration Concession license – the only license type that may be issued inside areas covered by the national forest moratorium. eForest’s role was to deliver strategic advice, bridge between the investor and local partners, and oversee the license application process.

We delivered our services over an 18 month period during which we prepared a technical proposal in support of the license application, provided inputs to the development of project design documents under both the Verified Carbon Standard and the Climate, Community and Biodiversity Standard, supported the local partner’s engagement and socialization process with local communities and government alike, and identified additional investment opportunities for our client.



CORPORATE REFERENCES

Since the company’s formal inauguration in May of 2010, eForest has completed numerous projects.

In line with our commitment to place our Clients interests first, maintain client confidentiality based on contractual agreements and put in to practice our Guiding Principle TRUST, eForest does not publically release information about our Clients. However we do offer a broad overview of the type of work we have completed to date:

Advice on market potential for log tracking services for a UK company.

Evaluation of potential barriers to FSC forest management certification for a forest plantation company in West Kalimantan.

Preparation of an HCV Assessment and HCV management & monitoring plan for a natural forest concession company in East Kalimantan.

Re-assessment audit of an FSC certified natural forest management company in East Kalimantan.

Development of multiple Briefing Notes on topics related to business operations in State Forests for a large International mining group.

Preparation of a Technical Proposal in support of an Ecosystem Restoration license application within the Ministry of Forestry.

Delivery of management and advisory services in support of an application for an ecosystem restoration concession for an institutional REDD+ investment company.

Advice and preparation of materials to support a natural forest concession company to achieve FSC forest management certification.

Trip facilitation of UK investors to a natural forest concession in Kalimantan.

“ we encourage you to contact us to discuss your needs ”

Provision of environmental business advice to an Indonesian foreign investment company.

Forestry advice on the potential for project development of forest management units (KPH).

Log administration & timber surveys in support of an early works program for an international mining company.

Forest license moratorium analysis and map production for an international mining company.

Production of documentation for a sustainable development project administered by an international conservation organization in Papua.

End of project evaluation of an international donor agency program to conserve orangutans in Sumatra and Kalimantan.

Facilitating investor off-take agreements between a mining company and international coal & minerals trading company.

Facilitating international investment in an environmental services forest concession in Sumatra.

Strategic advice, planning, and broader project development activities for an environmental services forest concession in Sumatra.

A review of the criteria and processes for allocating land for forest plantation development in Indonesia.



“ client satisfaction is our highest priority ”



Gedung Manggala Wanabakti Blok IV 5th Fl.
Suite 519c Jl. Gatot Subroto, Jakarta Pusat
10270, Indonesia T/F +62 21 5711317
info@eforest.co.id www.eforest.co.id

contact person: Benjamin Charles Jarvis

Join our network



experienced ■ efficient ■ effective ■ eforest.co.id

management consultants

